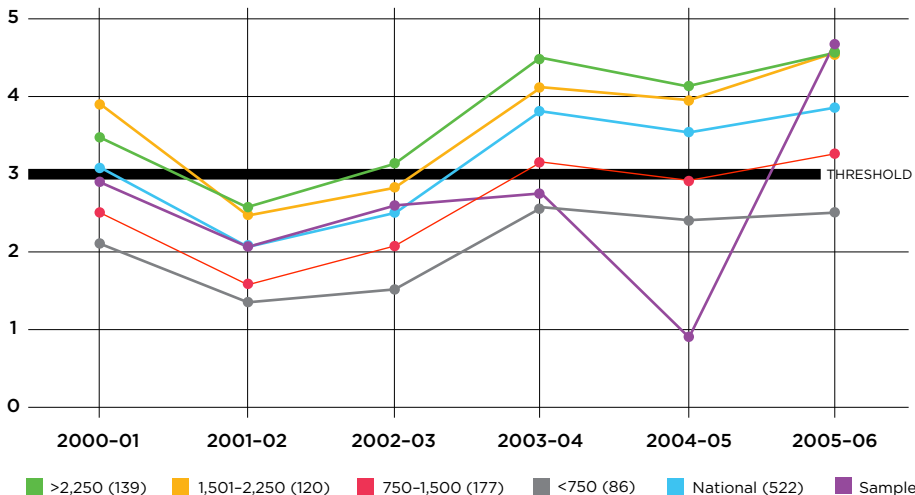


FIGURE Example of Composite Financial Index by Enrollment Size



Note: Data represent the Composite Financial Index (CFI) scores of 522 baccalaureate and master's level private not-for-profit colleges and universities grouped by four enrollment size categories (represented by group medians). The "National" line represents the median scores of all 522 institutions. The "Sample" line represents a sample college's scores. The CFI "Threshold" for financial viability is a score of 3.

Source: Financial Indicators Tool (FIT), Council of Independent Colleges